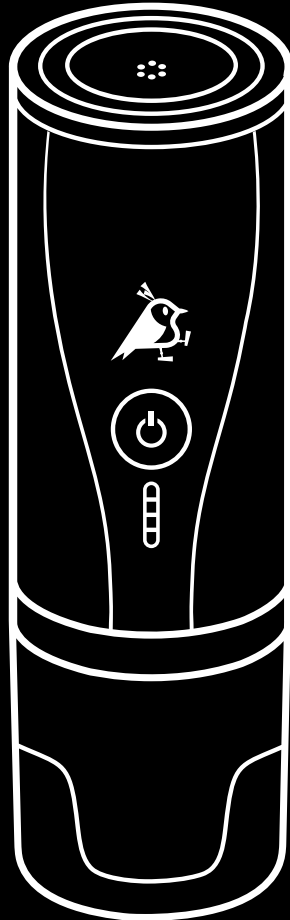
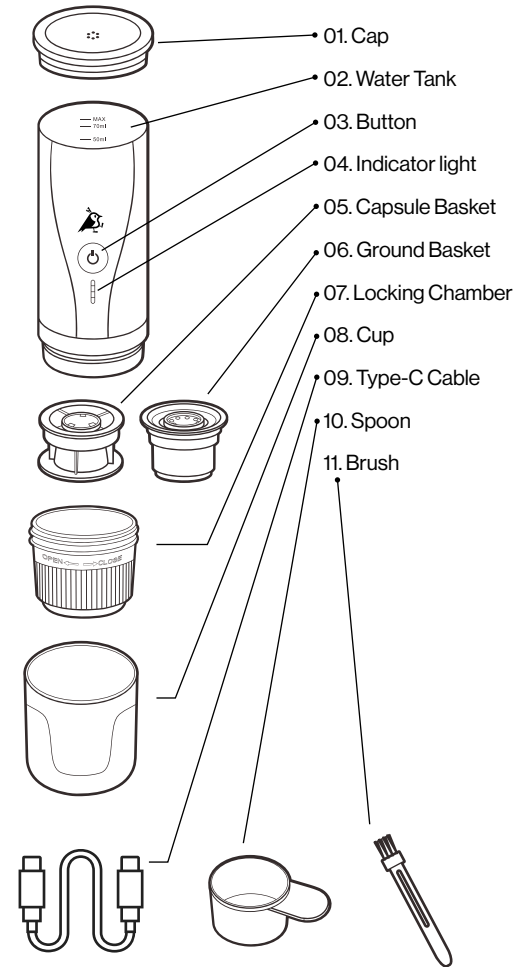


# Aquila® Coffeefbird

## User manual



### PRODUCT STRUCTURE



### ENJOY FRESH COFFEE WHEREVER YOU ARE.

**Introducing Coffeefbird: the one-button solution for effortless coffee brewing.** Just add water, coffee, and press button for a fresh cup anytime. The built-in battery makes the device portable and convenient to operate.

**2-in-1 Coffee - Coffee Capsules or Ground Coffee.** Brew your coffee using either Nespresso® capsules or standard ground coffee. Enjoy the flexibility to choose your preferred coffee type for the perfect cup every time.

Easy to clean and maintain. All accessories are washable

Included with your Coffeefbird is a convenient storage case which makes traveling and storing the device a breeze.

Water Tank Material	Food grade Stainless steel
Extraction Pressure	20 bar
Extraction Temp	94°C
Net Weight	650 g
Built-in Battery	7500 mAh
Charging time	3 hours
Charge input	USB-C (>10W)
Capacity	Max. 80 ml
Applicable	Nespresso® Capsule / Ground Coffee

\*Nespresso® is trademarked by third party and not affiliated with Aquila in any way.

### ATTENTION:

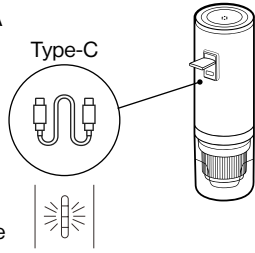
- Please read all the point below and keep the manual well:
- Keep the Coffeefbird out of reach of children, do not hand over the machine to the person who does not know how to use and never have read the manual.
  - This Coffeefbird is for personal use only.
  - Check the device before use, do not use if it is damaged.
  - Keep the packaging bag and accessories out of reach of children.
  - Please use the device carefully when there are children nearby.
  - Do not expose the machine to fire, direct sunlight or high temperature.
  - Do not hold the machine in the stove, oven, micro-wave oven or dish washer.
  - Use mineral or purified water
  - When in use, tighten the locking chamber to avoid leakage.
  - Do not fixor replace parts personally

### IMPORTANT NOTICE:

- Attention, there might be danger for improper use.
- If you fill in hot water, please make sure that the device keeps stable to avoid the risk of splashing and scald.
- During heating, DO NOT open the cap to avoid scald.
- After use, please wait a few minutes and take out the used capsule to avoid scald.
- Please make sure there is water in the water tank before each use. Do not use the device with empty water tank, as it might damage the device.

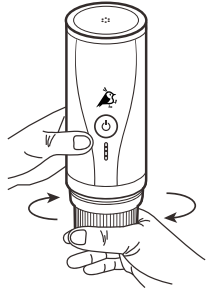
## CHARGING:

Please use a 5V/2A or 5V/3A USB wall charger to charge. The device will not be charged while using a charger below 10W (e.g. the Apple 5W charger).



Use type-C cable for charging. When connecting to the cable, the lights will turn on according to the power status. When fully charged, the lights will turn off in 1 minute.

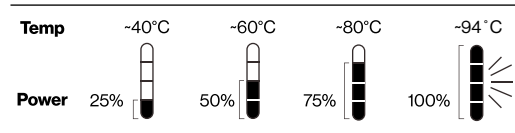
## USAGE INSTRUCTION:



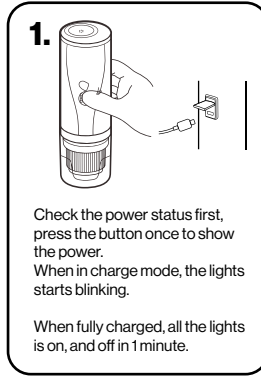
Please check the power status before first use. (Slightly press once to show the power)

During non-stop extraction, if there is no coffee coming out, please loosen the locking chamber, then tighten again.

Please wait more than 5 minutes for continue heating. Clean the machine before use. (See cleaning part)

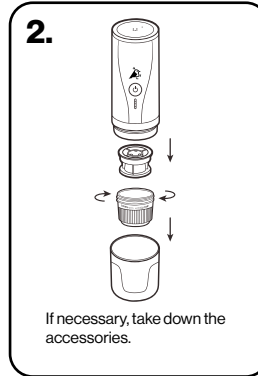


## TYPICAL USAGE PROCEDURE:

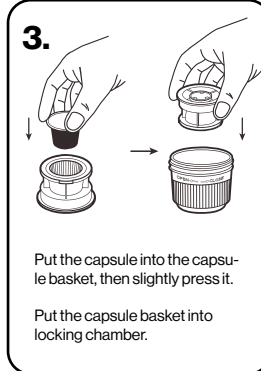


1. Check the power status first, press the button once to show the power. When in charge mode, the lights starts blinking.

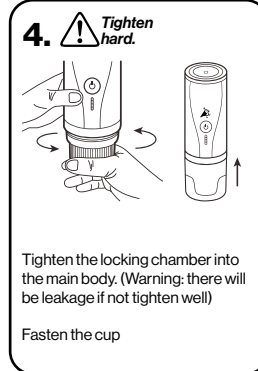
When fully charged, the lights is on, and off in 1 minute.



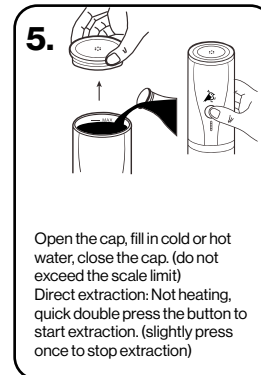
2. If necessary, take down the accessories.



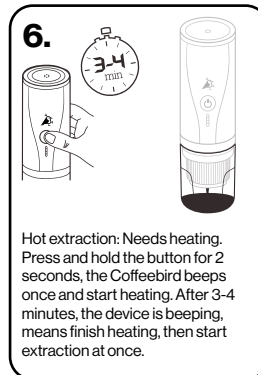
3. Put the capsule into the capsule basket, then slightly press it. Put the capsule basket into locking chamber.



4. Tighten the locking chamber into the main body. (Warning: there will be leakage if not tighten well) Fasten the cup

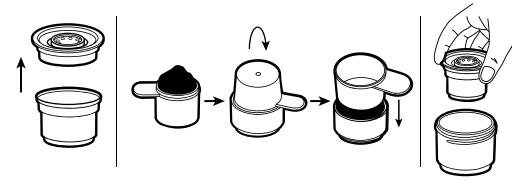


5. Open the cap, fill in cold or hot water, close the cap. (do not exceed the scale limit) Direct extraction: Not heating, quick double press the button to start extraction. (slightly press once to stop extraction)



6. Hot extraction: Needs heating. Press and hold the button for 2 seconds, the Coffeebird beeps once and start heating. After 3-4 minutes, the device is beeping, means finish heating, then start extraction at once.

## HOW TO USE GROUND COFFEE:



### Change the above step 2 to as follow:

Use ground basket.

Take out the cap, use spoon to fill 5-8g fine ground coffee. Then use the bottom to press, close the cap. Then go back to above step 3.

## CLEANING & DESCALING:

- After each use, take out the capsule or ground coffee and clean the basket.
- No capsule operation, fill the hot water into water tank. Quick press the button two time, keep repeating this operation. Keep repeating this operation until it's clean.
- There will be water remains in the tank, clear it and dry it.
- Use wiper to clean the main body, do not wash it in the dish washer or direct into the water.
- Do not use detergent.
- Clean the device every day

## STORAGE:

- Do not expose the machine to fire, direct sunlight or high temperature.
- Do not stay in the car under the straight sunshine.
- Store the machine in a cool, dry place.

## ENVIRONMENTAL PROTECTION

Electrical equipment is not permitted to be disposed of in household trash. According to European Directive 2021/19/EU on waste electrical and electronic equipment and its incorporation into national law, it is imperative to collect such equipment separately and handle it at a dedicated recycling center, ensuring environmental compliance. Familiarize yourself with local specialized collection facilities designated for electrical and electronic equipment marked with this symbol.

Aquila®



## NEED THE MANUAL IN LOCAL LANGUAGE?

Visit [aqila.eu](http://aqila.eu) and download the manual to your device.

Visit [aqila.eu](http://aqila.eu)

Get in touch: [www.aqila.eu](http://www.aqila.eu) | [hello@aqila.eu](mailto:hello@aqila.eu)

Contact: GPBM Nordic AB | Sörredsvägen 113 | 418 78 Göteborg | Sweden

Contact: Brands Services B.V. | Florijn 14-16 5751 PC Deurne | The Netherlands



Made in P.R.C

Manual version: 2024-1

