



PHOENIX GOLD



INTEGRATION



ZDSKVW1

Plug & Play 2-Way Speaker Upgrade Kit

**160W MAX POWER
80W RMS**

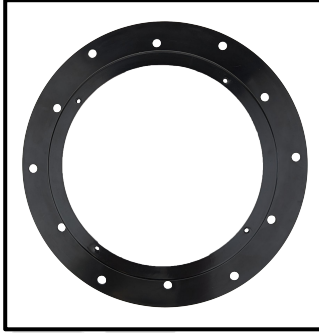


PHOENIX GOLD

2x Speakers



2x Adapter Rings



2x Tweeters



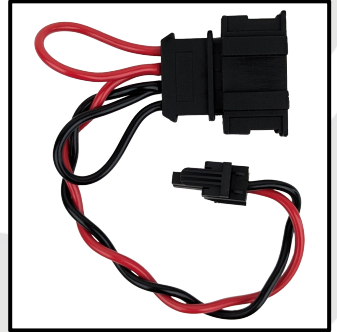
2x Tweeter Adapters



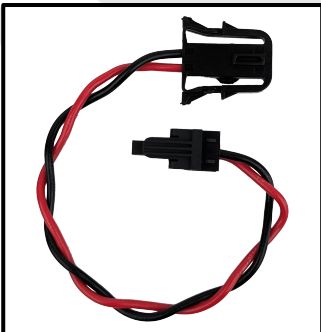
2x Bottom Plates



2x Speaker Harness



2x Tweeter Harness



2x ZZFLP4000



2x ZZFH4000-6





PHOENIX GOLD

Quick Start Guide

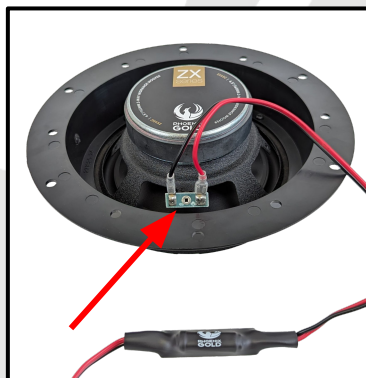
1

Screw the speaker into the speaker adapter.



2

Connect the ZZF-LP4000 filter to the speaker.



3

Connect the speaker harness to ZZF-LP4000.





PHOENIX GOLD

Quick Start Guide

4

Put the tweeter into the tweeter adapter.



5

Attach the bottom plate to the back of the tweeter adapter.



6

Connect the ZZF-HP4000-6 filter to the tweeter.
Connect the tweeter harness to the ZZF-HP4000-6 filter.





PHOENIX GOLD

Specifications

| | |
|---|--------------------------|
| Speaker Type: | 2-Way Speaker Kit |
| Speaker Size: | 6.5" (165mm) / 1" (25mm) |
| Frequency Response: | 60Hz - 20kHz |
| Power Handling (RMS): | 80W |
| Power Handling (MAX): | 160W |
| Impedance: | 4Ω |
| Sensitivity: | 89dB (1W/1m) |
| Fs: | 62Hz |
| Qts: | 0.593 |
| Crossover: | Inline Crossovers |
| 1" (25mm) Voice Coil | |
| Polypropylene cone with rubber surround | |



PHOENIX GOLD



INTEGRATION

Disclaimer

Always ensure the speaker is securely attached. Phoenix Gold accepts no responsibility for damage or injury in relation to inappropriate securing of this product.

Phoenix Gold Product Warranty

LIMITED WARRANTY ON SPEAKERS

Phoenix Gold warrants this product to be free of defects in materials and workmanship for a period of one (1) years from the original date of purchase. This warranty is not transferable and applies only to the original purchaser from an authorized Phoenix Gold dealer. Should service be necessary under this warranty for any reason due to manufacturing defect or malfunction, Phoenix Gold or it's Country distributor / reseller will (at its discretion) repair or replace the defective product with new or re-manufactured product at no charge. Damage caused by the following is not covered under warranty: accident, misuse, abuse, product modification or neglect, failure to follow installation instructions, unauthorized repair attempts, misrepresentations by the seller. This warranty does not cover incidental or consequential damages and does not cover the cost of removing or reinstalling the unit(s). Cosmetic damage due to accident or normal wear and tear is not covered under warranty.